



Star-disk-jet numerical simulations

Miljenko Cemeljic

席門傑

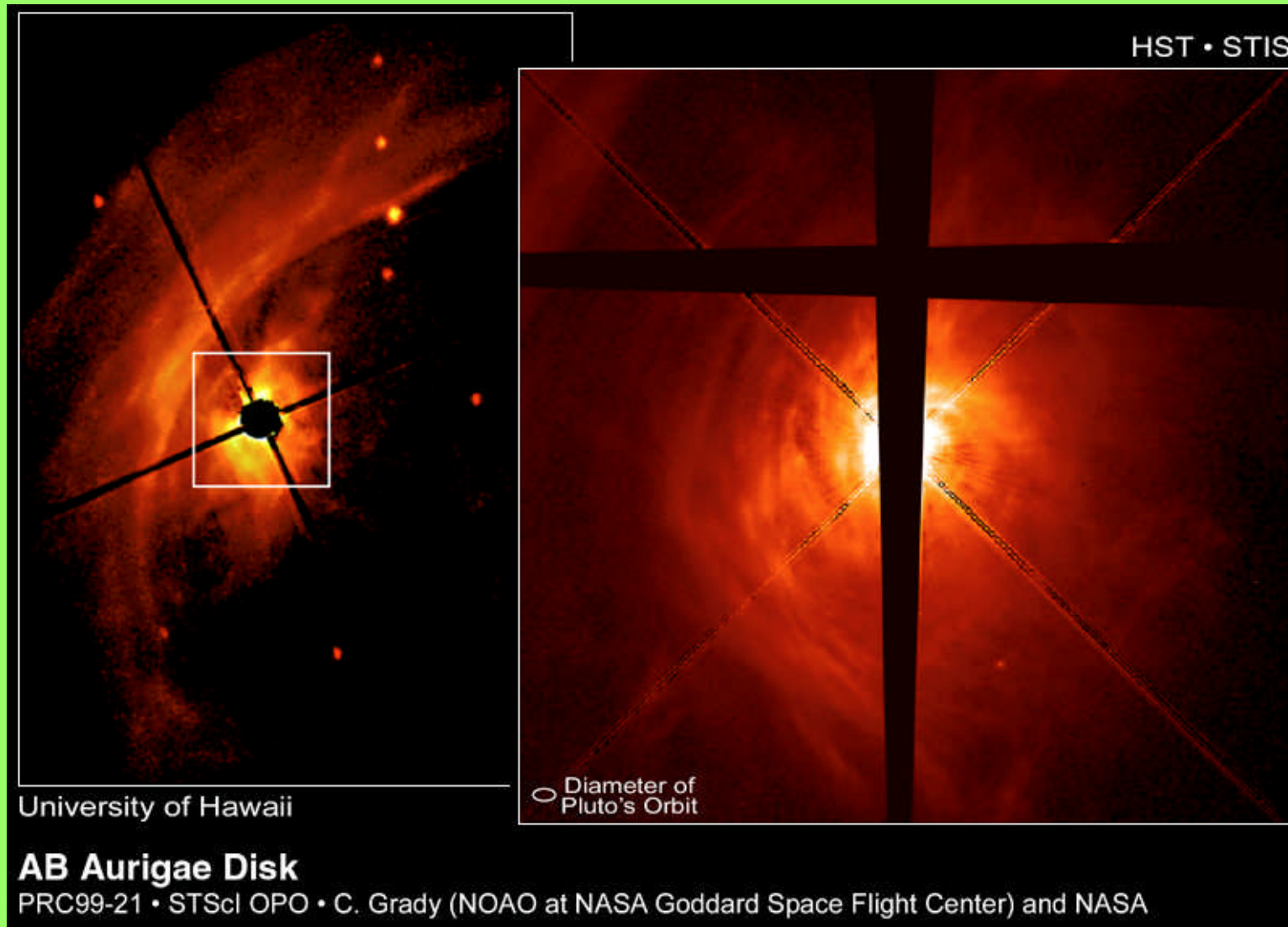
Hsien Shang & Tzu-Yang Chiang

TIARA (ASIAA, NTHU Hsinchu)

Outline

- Introduction
- Model
- Initial and boundary conditions
- Results
- Summary

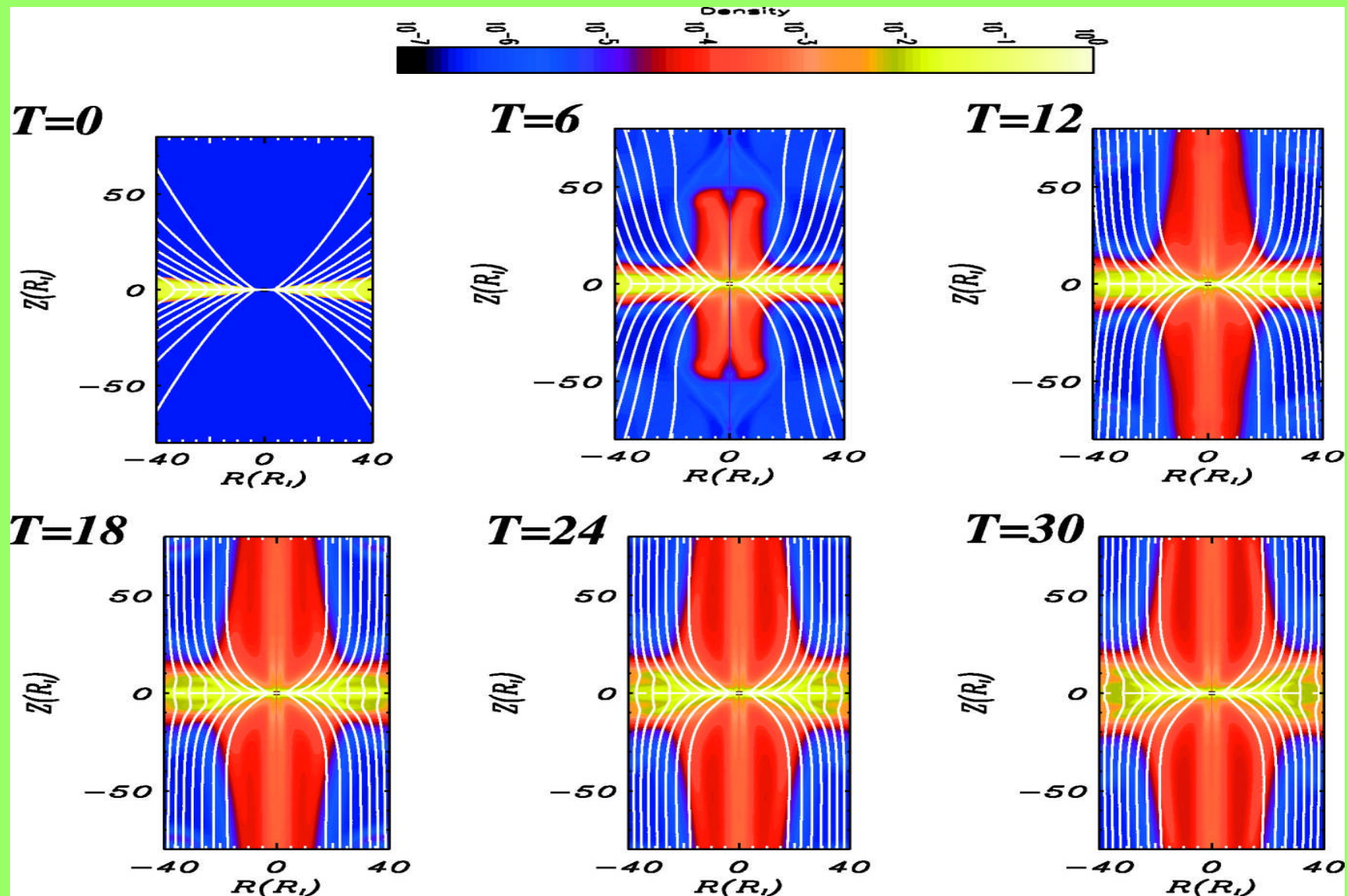
Dust disk



Introduction

- Protostellar jet launching problem
- Disk as a boundary
- Disk included in the simulations
- Resistive vs. other dissipative processes

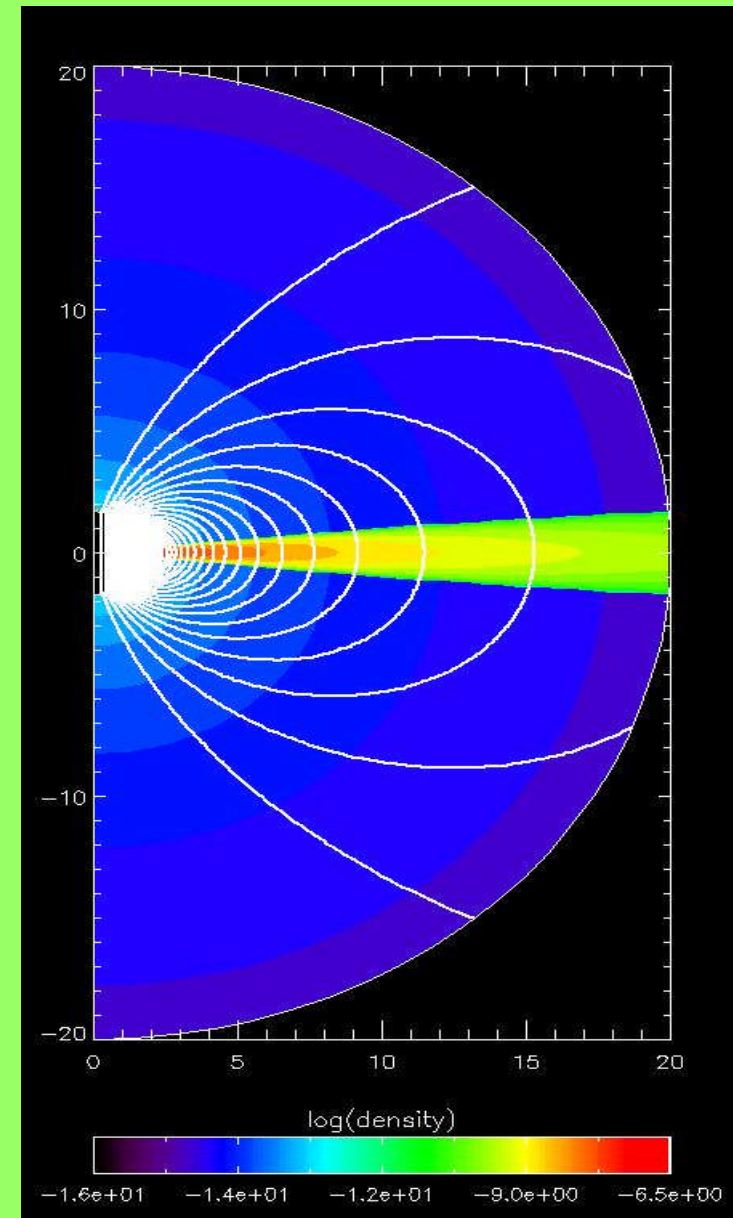
Simulations with disk open field



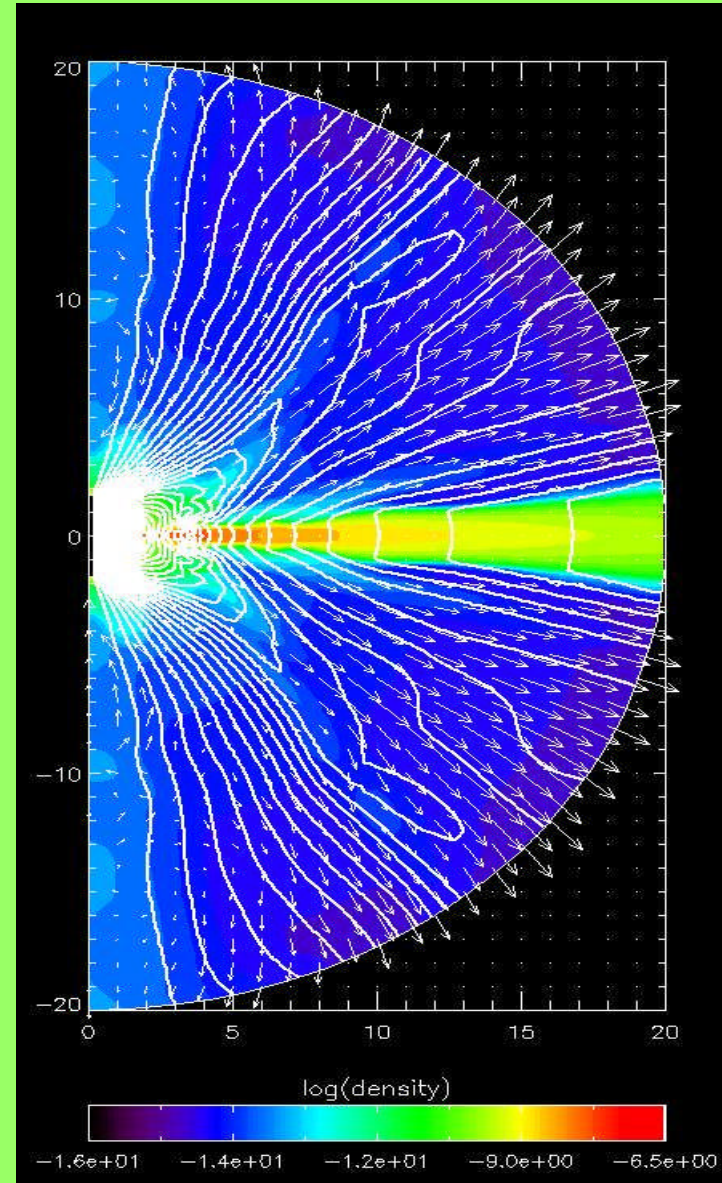
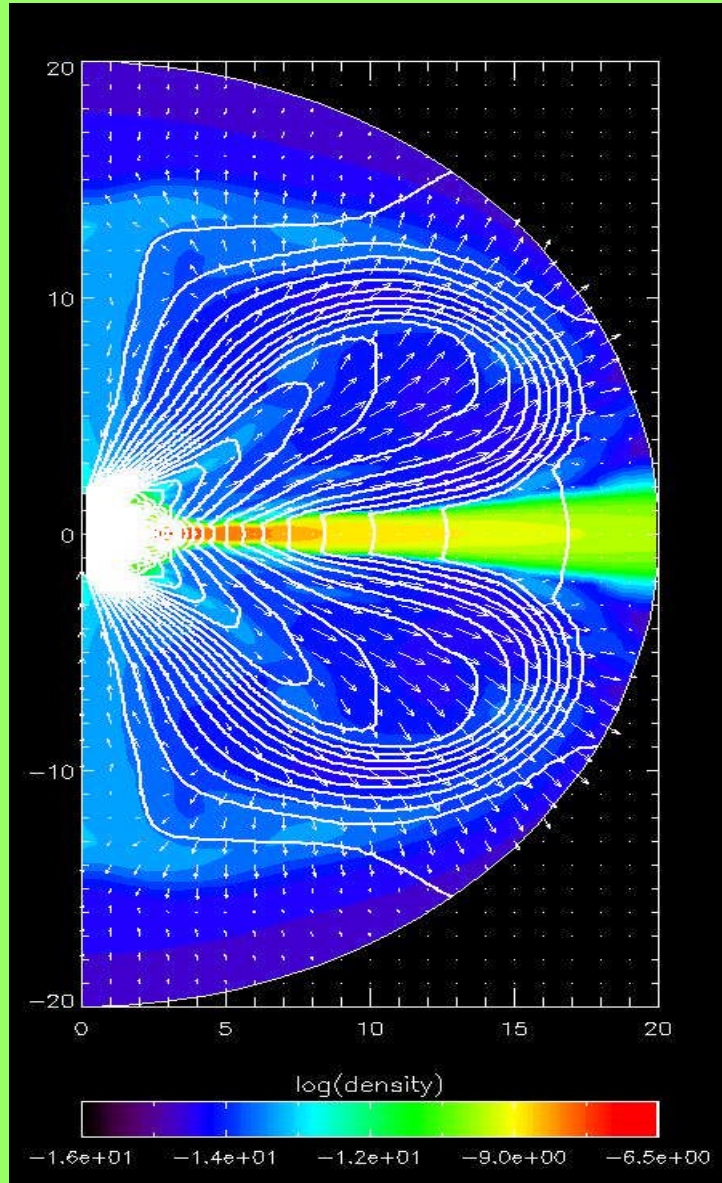
Casse & Keppens, 2002

Simulations with stellar dipole field

- M. Kuker et al. 2003 – CTTS simulations, disk and disk corona included in the simulations, star as b.c.
- Magnetic field: stellar dipole field
- $T_{\text{disk}}=7000\text{K}$, $T_{\text{halo}}=5000\text{K}$
- Density in disk $\sim 10\,000$ times larger than in halo

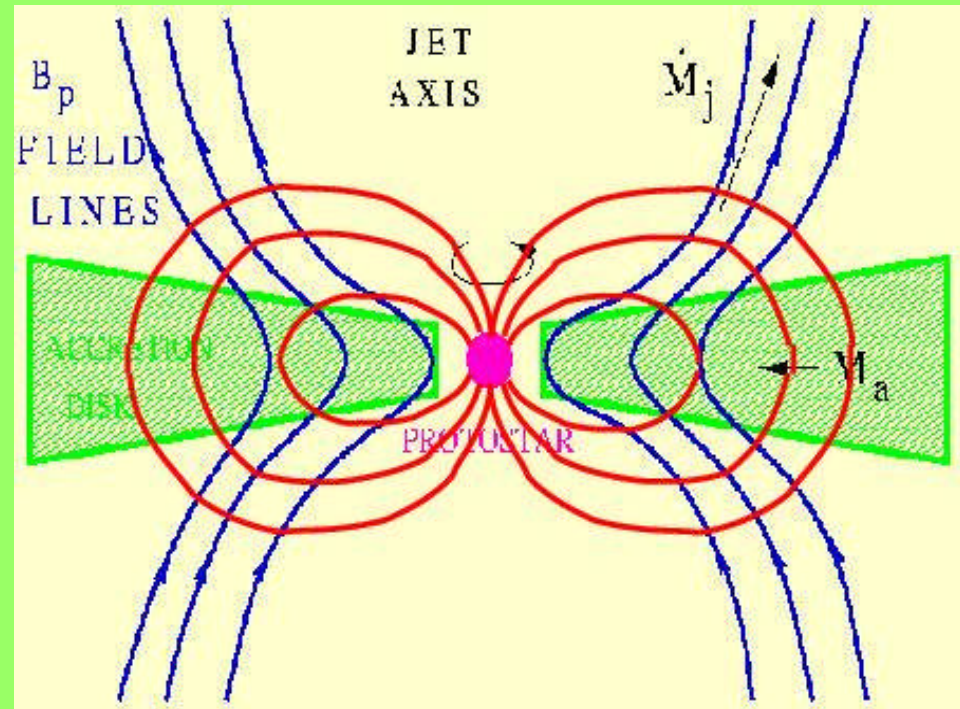


After 22 and 26 rotations



Simulations with dipole + open field

- Disk included in computational box
- Interaction of stellar magnetosphere & disk
- Stellar surface “included”



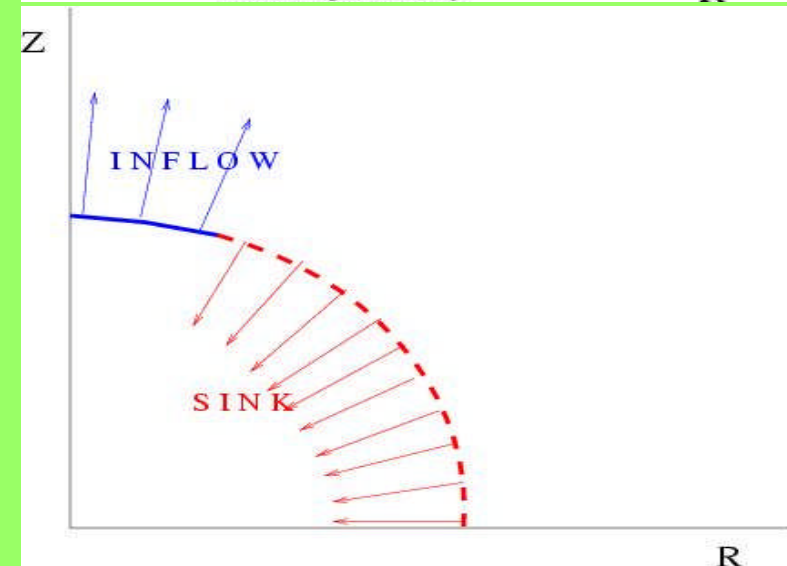
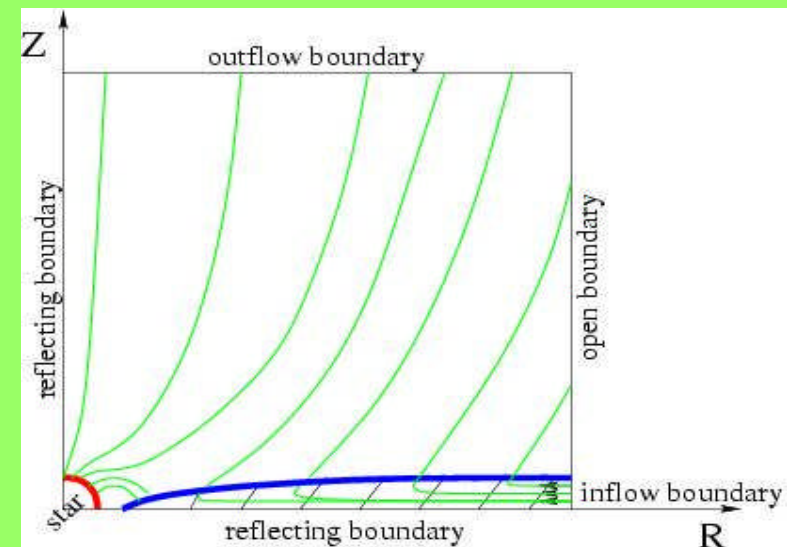
ZEUS-347

- Time-dependent resistive MHD simulations- **ZEUS347, stellar dipole +open field threading the disk**
- Setup:
**RxZ=(160x250)grid
cells=(12x12)R_i**

$$\begin{aligned}\frac{\partial \rho}{\partial t} + \nabla \cdot (\rho \mathbf{u}) &= 0 \\ \rho \left[\frac{\partial \mathbf{u}}{\partial t} + (\mathbf{u} \cdot \nabla) \mathbf{u} \right] + \nabla p - \rho \nabla \left(\frac{GM}{\sqrt{r^2 + z^2}} \right) - \frac{\mathbf{j} \times \mathbf{B}}{c} &= 0 \\ \frac{\partial \mathbf{B}}{\partial t} - \nabla \times \left(\mathbf{u} \times \mathbf{B} - \frac{c \mathbf{j}}{\sigma} \right) &= 0 \\ \rho \left[\frac{\partial e}{\partial t} + (\mathbf{u} \cdot \nabla) e \right] + p(\nabla \cdot \mathbf{u}) - \frac{\mathbf{j}^2}{\sigma} &= 0 \\ \nabla \cdot \mathbf{B} &= 0 \\ \frac{4\pi}{c} \mathbf{j} &= \nabla \times \mathbf{B} \\ \frac{\partial \mathbf{B}}{\partial t} &= \nabla \times (\mathbf{u} \times \mathbf{B}) + \eta \nabla^2 \mathbf{B}, \quad \eta = \frac{c^2}{4\pi\sigma}\end{aligned}$$

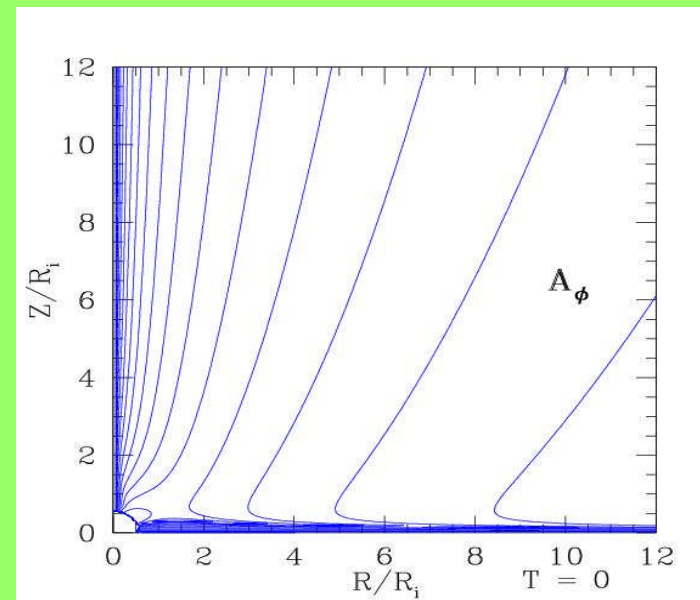
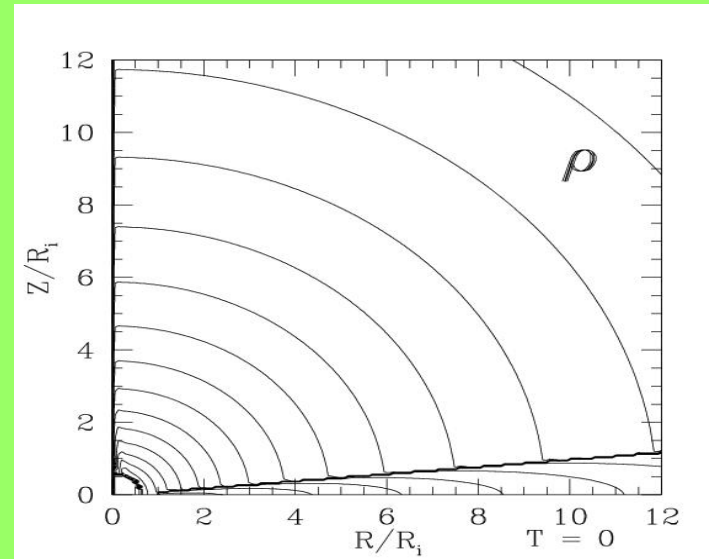
Boundary conditions

- Time-dependent **resistive MHD** simulations- **ZEUS347**, stellar **dipole +open field** threading the disk
- Setup:
 $R \times Z = (160 \times 250)$ grid
cells = $(12 \times 12) R_i$

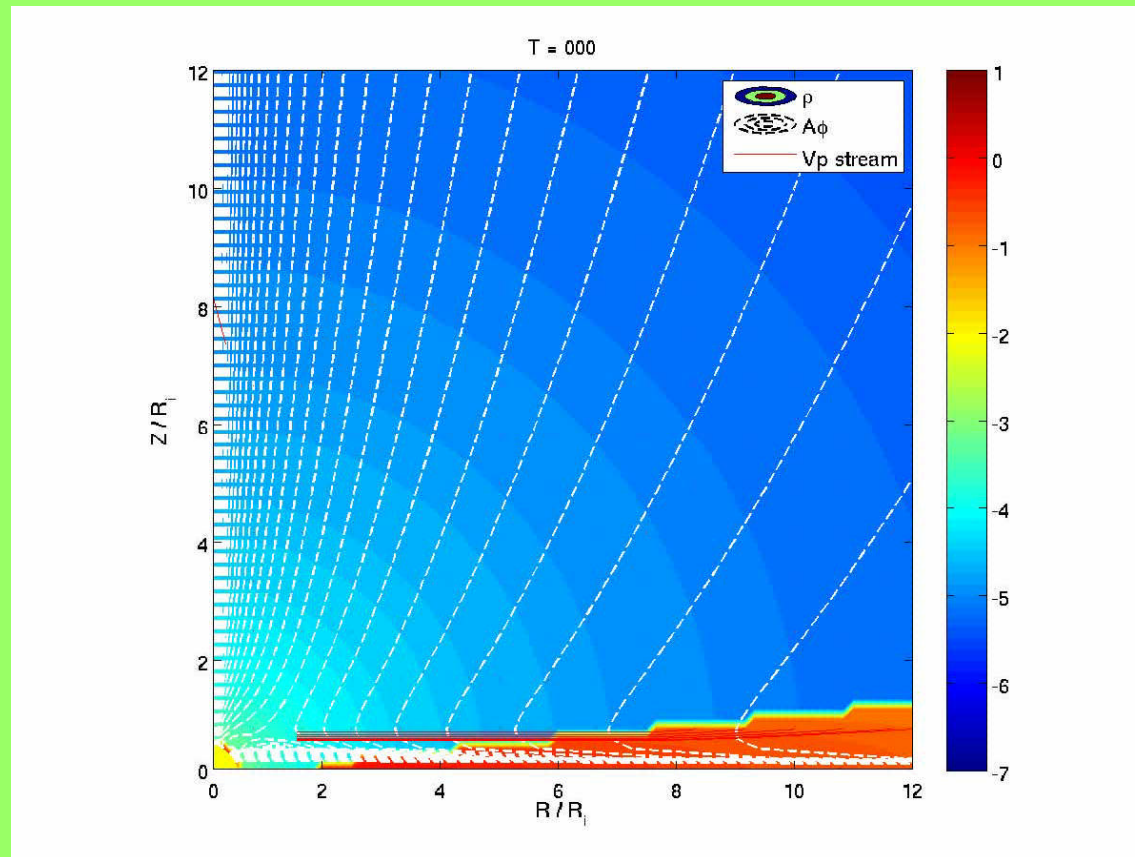


Initial conditions

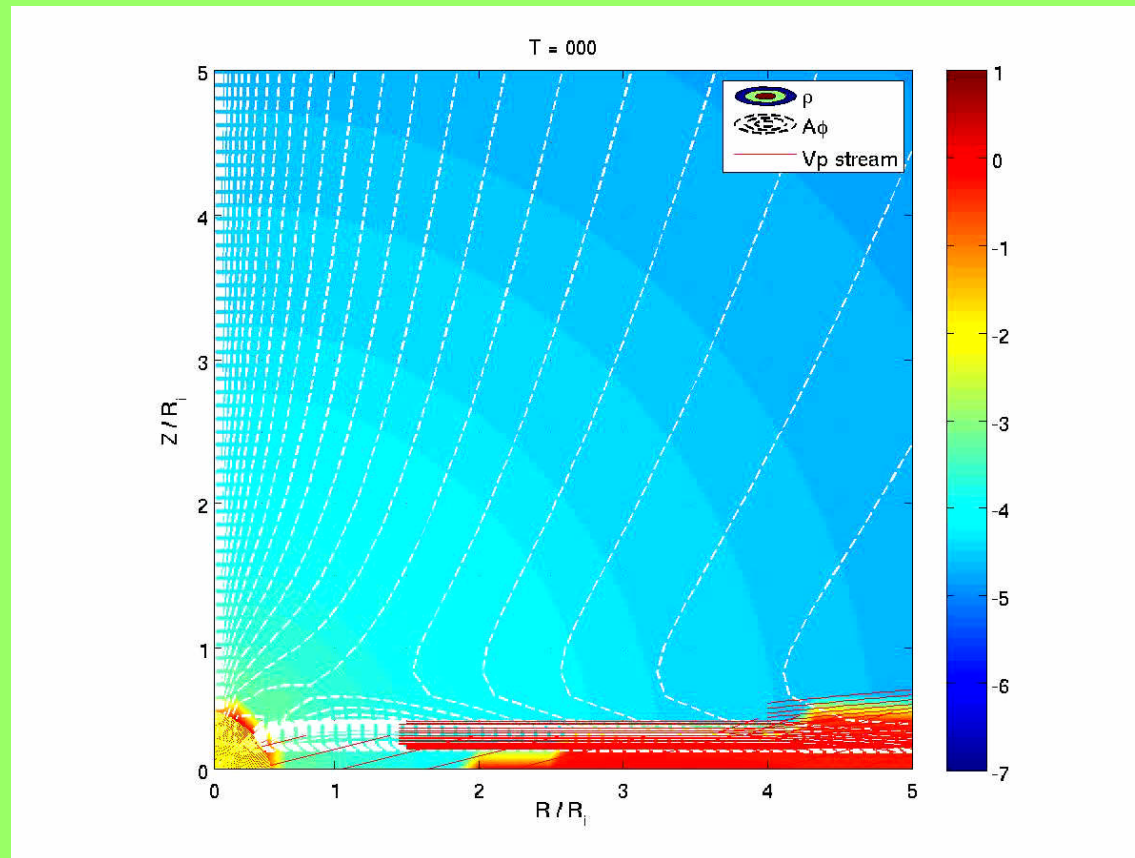
- Hydrostatic co-rotating corona above the disk in hydrostatic and magnetic forces balance
- Resistive disk, corona effectively ideal-MHD
- Star as a boundary



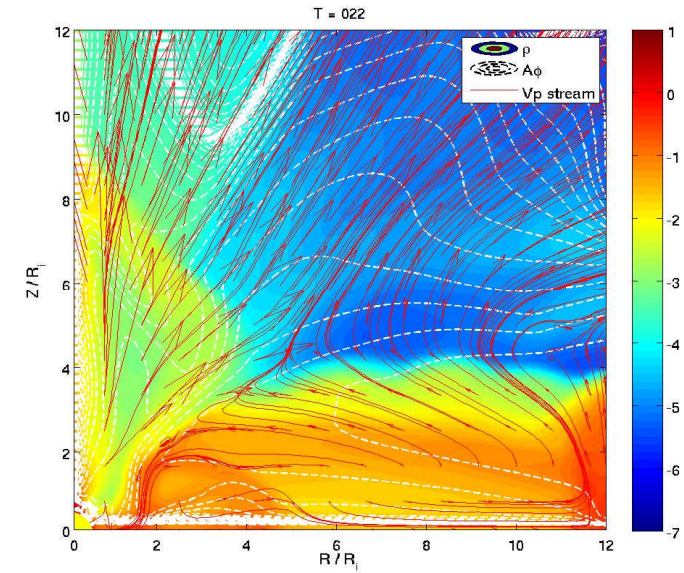
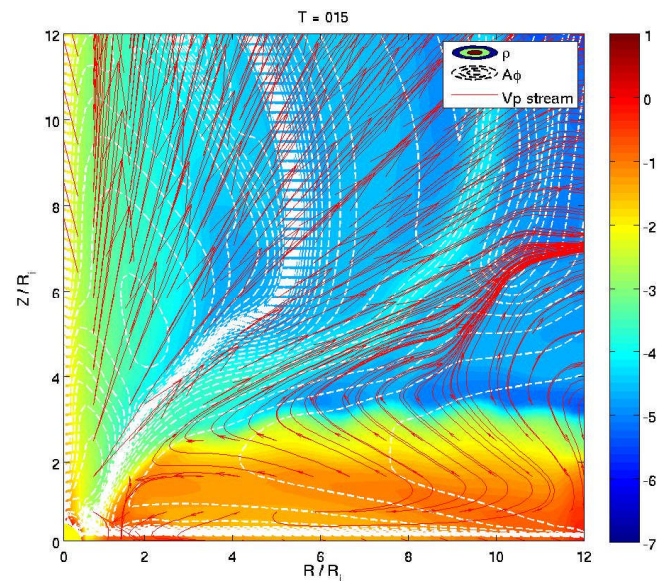
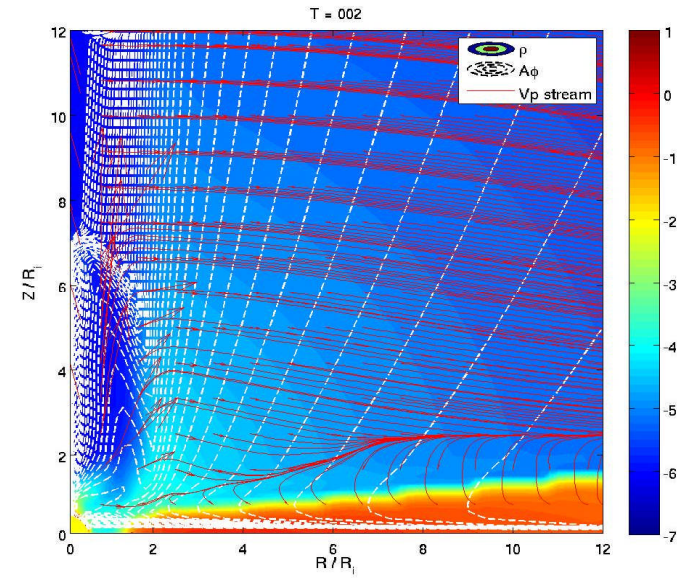
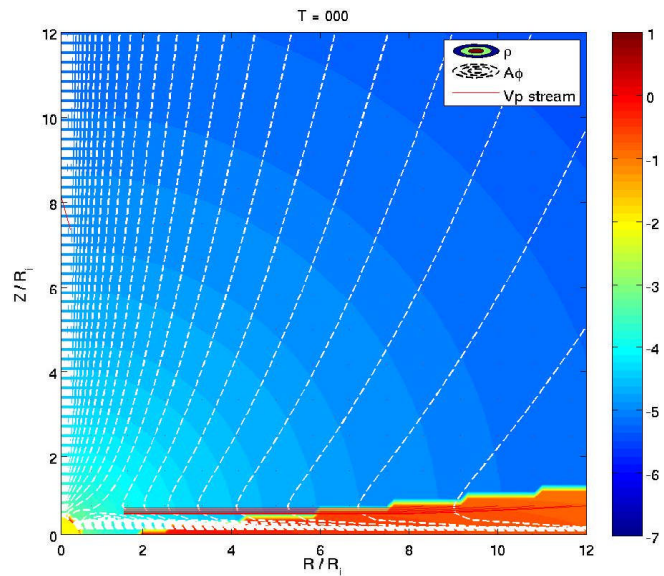
Results 1-animation



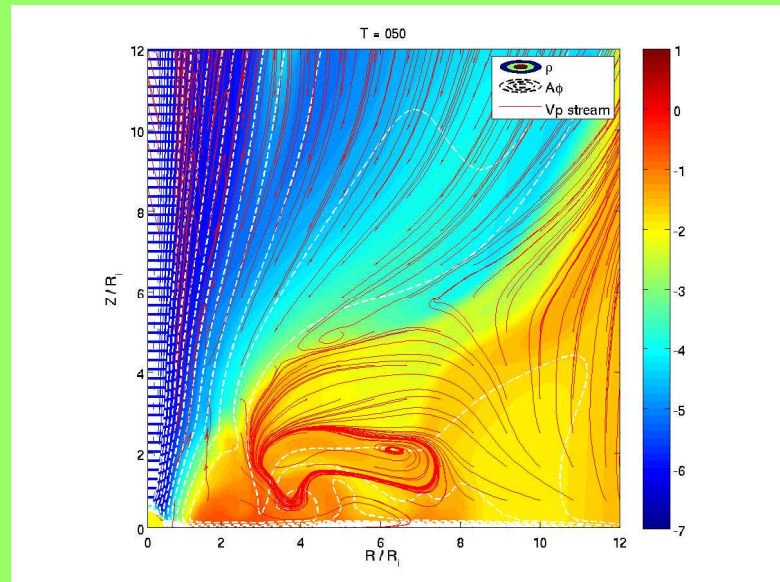
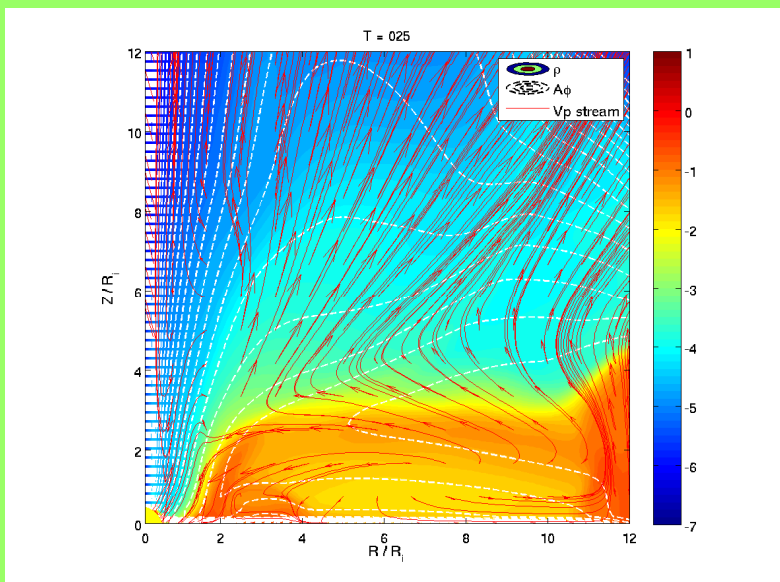
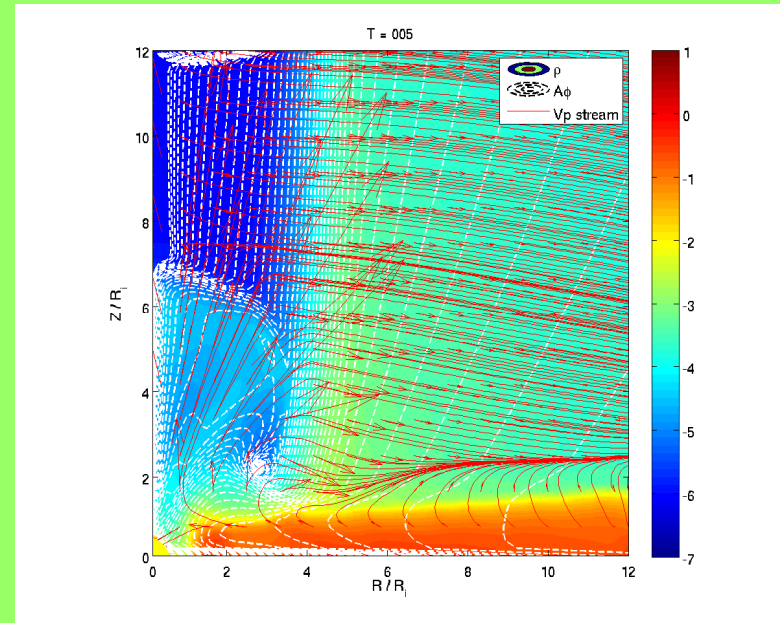
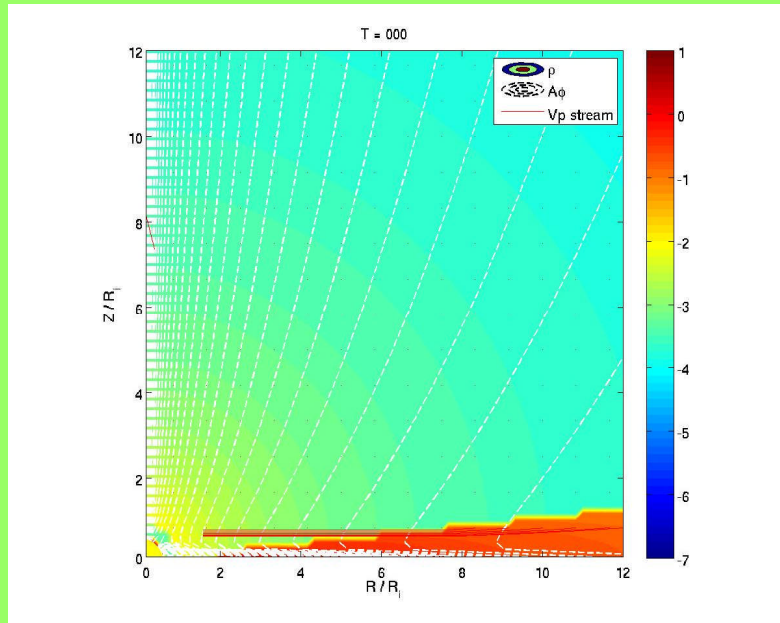
Results 1-animation, zoom



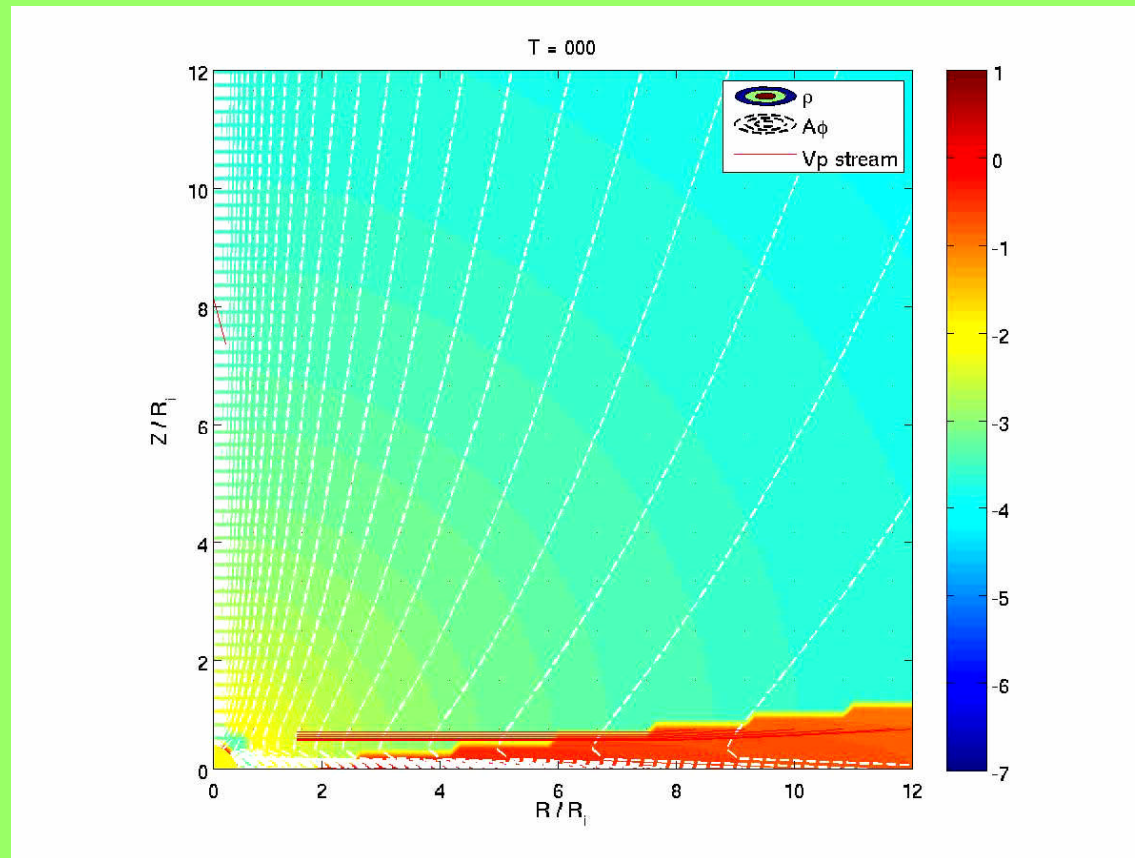
Results 1 - stills



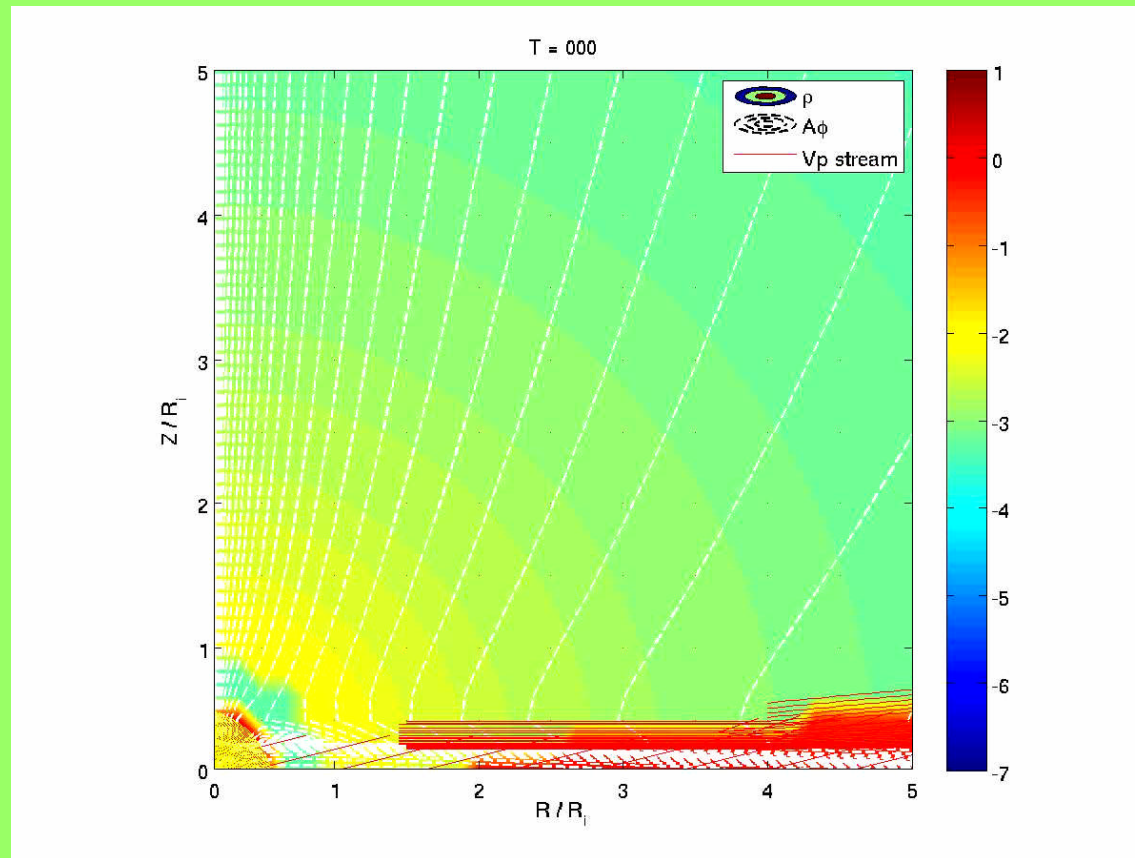
Results 2- stills



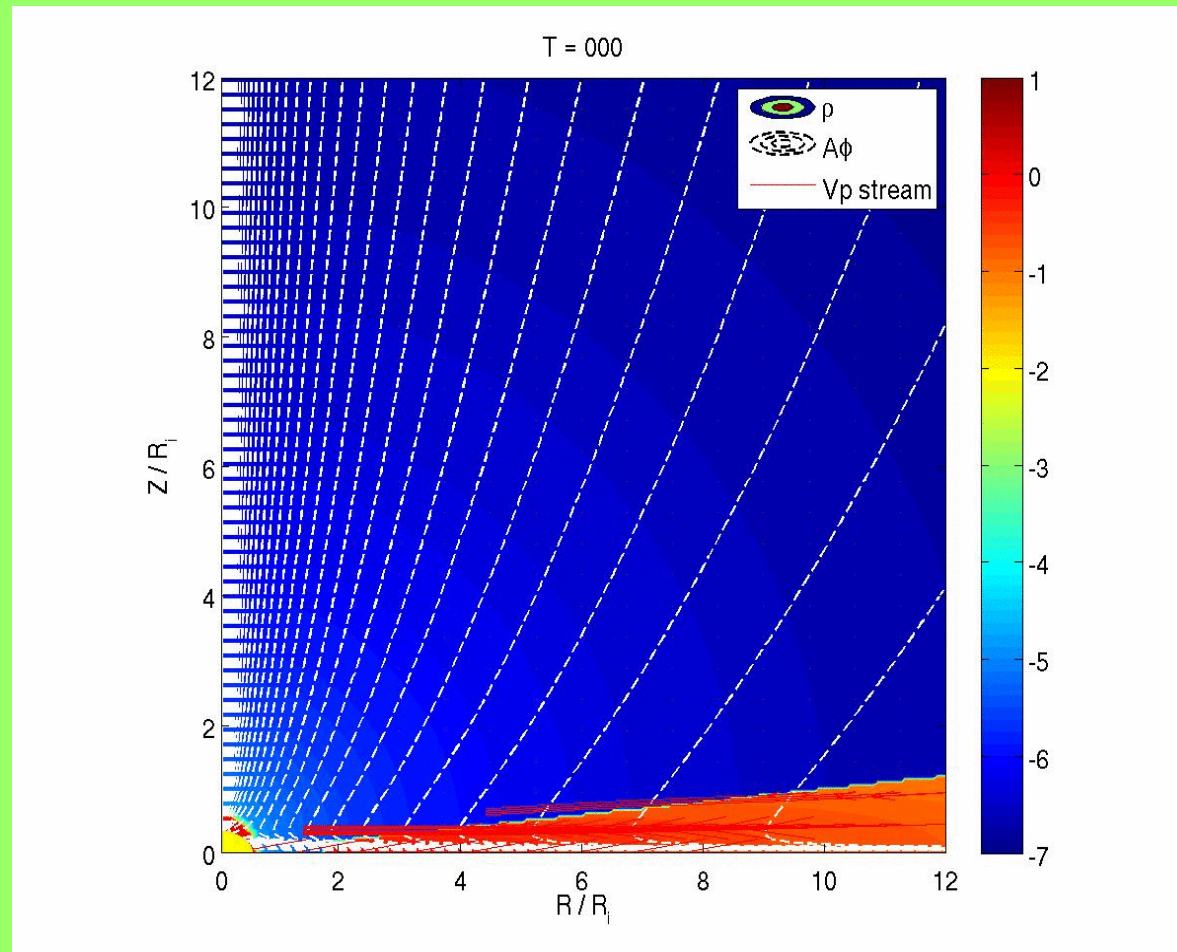
Results 2-animation



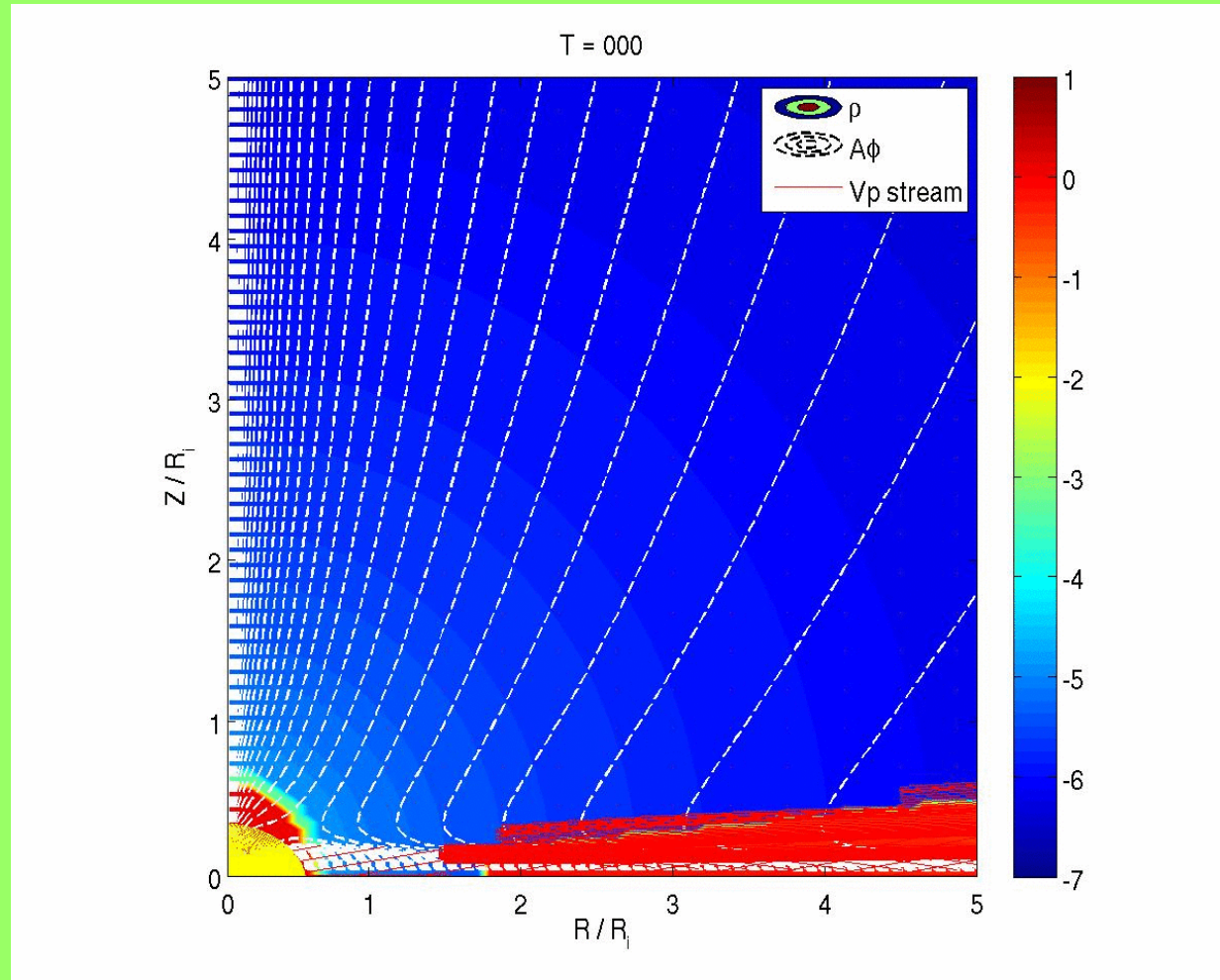
Results 2-animation, zoom



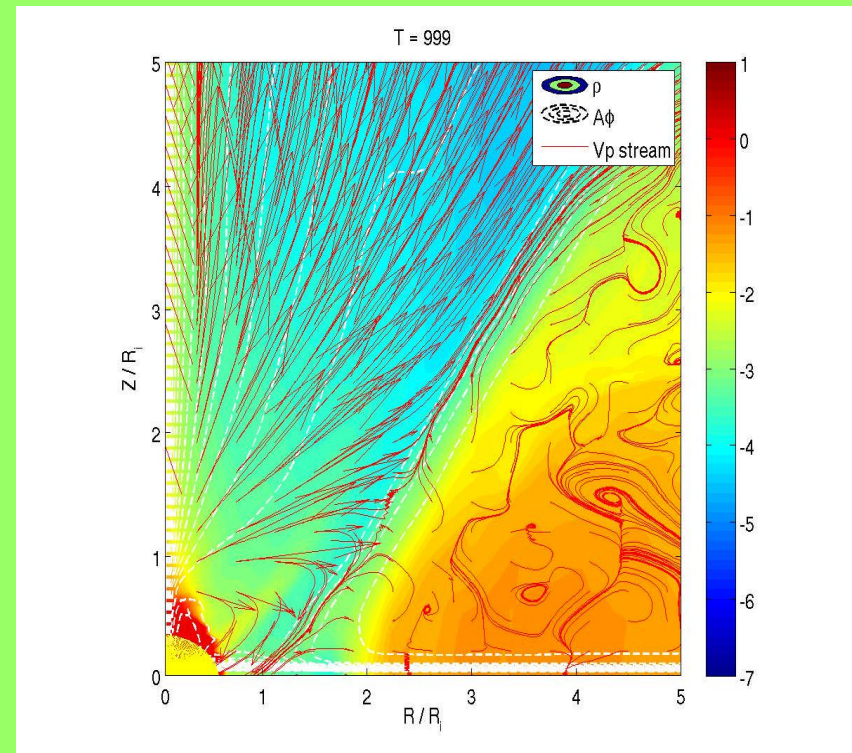
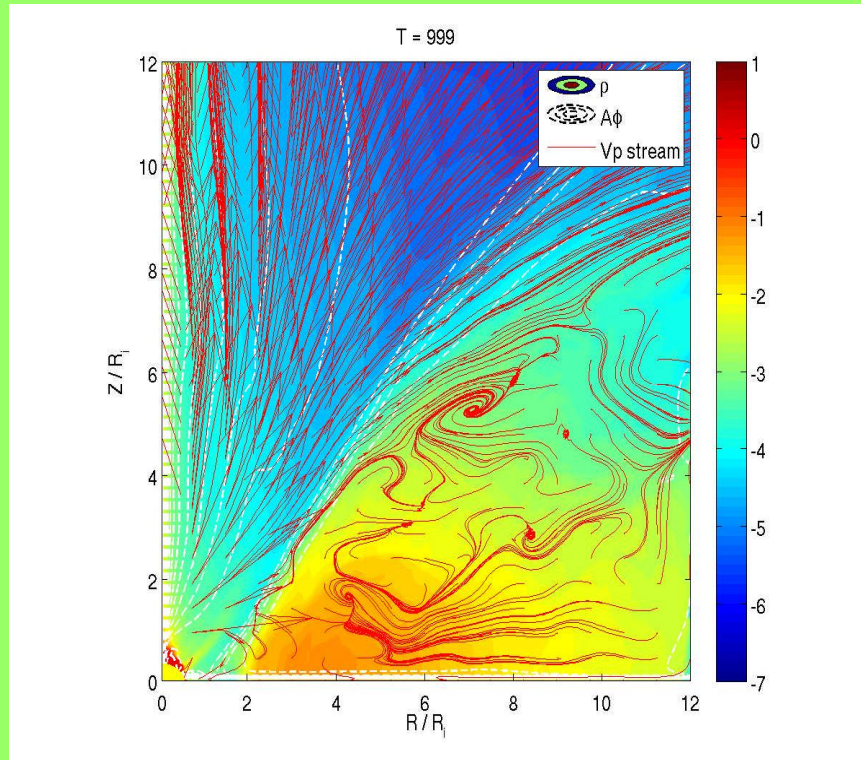
Results 3 - animation



Results 3 – animation, zoom



Results 3 - stills



Summary

- Numerical simulations in various geometrical setups
- Magnetic fields from simpler to more complicated
- Close vicinity of the star
- Prospects: Accretion disk & Full 3D simulations