

# Star-disk interaction

Miljenko Čemeljić, 席門傑

CEA/SAp/LDEE, Saclay (*bat. 709, p.231*)

## Where, when, what

- Croatia, island of Pag, here via: Zagreb (Uni-Master in Physics '96), Warsaw (RA, Copernicus Center '97-'99), Potsdam (Astrophysikalisches Institut, Uni-PhD '05), Athens (Uni-Marie Curie Fellow '05-'07), Taiwan (ASIAA/TIARA-Visiting Scholar '05,'07-'14), Paris (CEA, Saclay, SAp, LDEE, '14-'15)



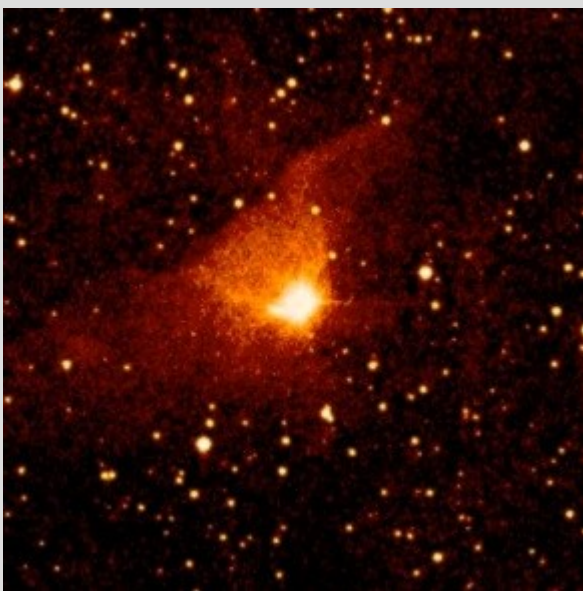
## Outline

- Introduction
- Star-disk problem in TOUPIES project
- Setup of star-disk simulations
- Some initial results
- Stellar boundary condition
- Stellar quadrupole, octupole and mixed multipole field
- Summary

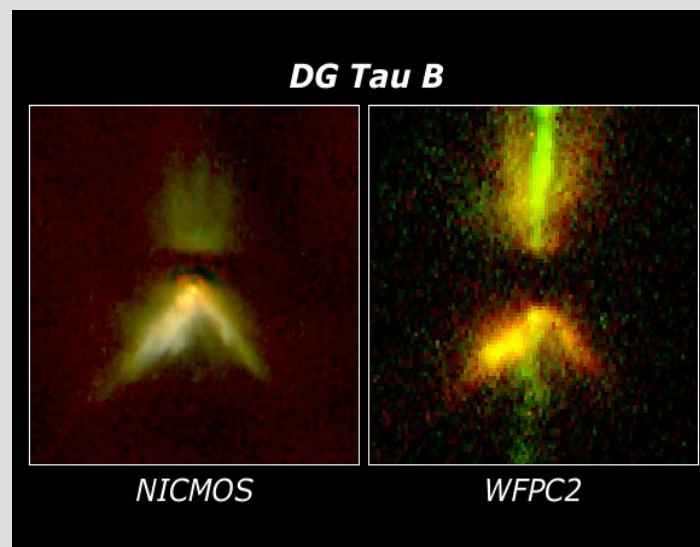
## Introduction-1

- During the evolution from a pre-stellar core to protostar, the angular momentum decreases for about 4 orders of magnitude. The exact mechanism of this decrease is still not known. There seems to be a consensus that the spin-up of a star is prevented by the magnetic interaction between the star and the disk.
- There are more ways of extracting the angular momentum from the system:  
-violent outbursts, -stable outflows & jets, -an accretion column from the disk onto the star.

FU Ori (ESO)



DG Tau B



## Introduction-2

- The largest dispersion in rotation rates is observed in solar mass young stars. When they reach the Main Sequence, they rotate with very different rotational velocities: from less than 10 km/s to more than 200 km/s. In a later evolution, after few billion years, most of them rotates with rotational velocity of few km/s; dispersion in rotation drops to only a few percents.
- For solar mass stars, spin-down is thought to be mainly because of a braking effect of magnetically driven winds. As the wind moves away from the star, its angular velocity decreases. The magnetic field of the star interacts with the wind, which slows the stellar rotation. As a result, angular momentum is transferred from the star to the wind, and the star's rate of rotation gradually decreases. Skumanich's Law (1972) states that, for a Main Sequence star on time scale of several hundred Myrs, angular velocity of a star decreases as  $\Omega \sim 1/\sqrt{t}$ .
- To obtain a full picture about torques in the system, both wind braking and star-disk interaction have to be considered. My simulations are to give an input on star-disk interaction.

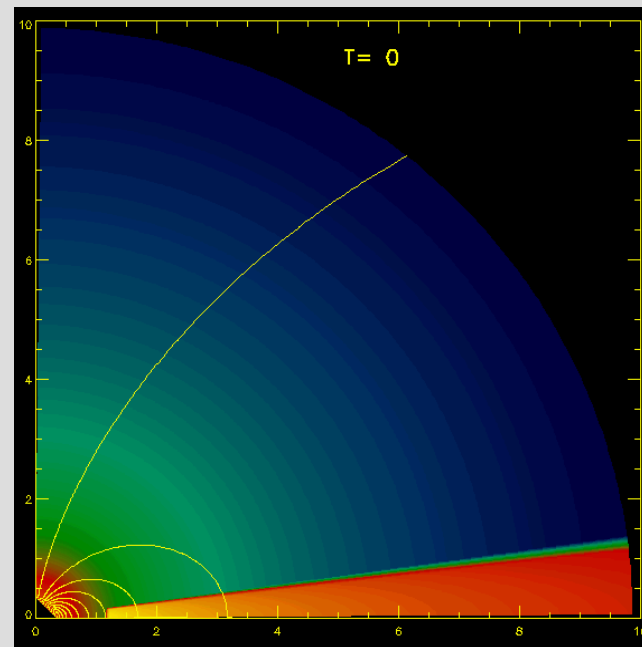
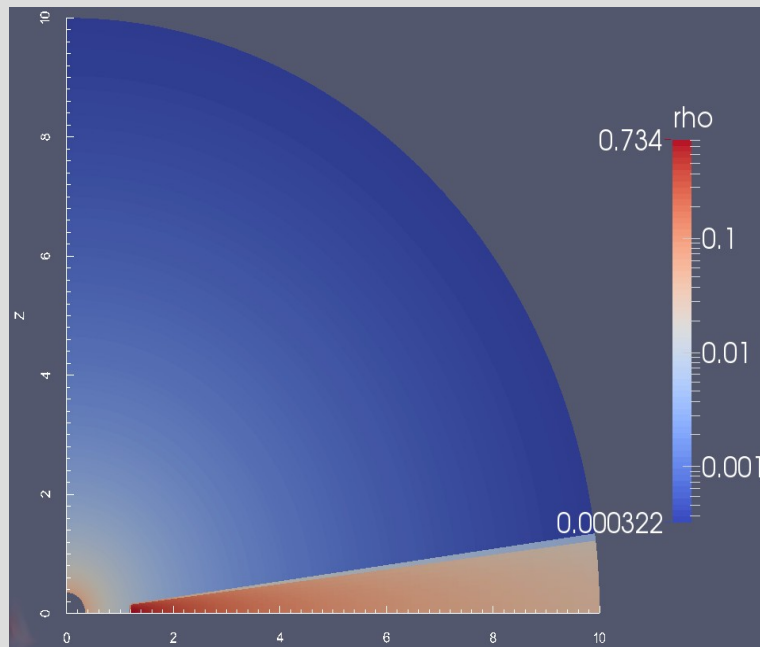
## Star-disk problem in TOUPIES project

- As a part of ANR-TOUPIES (TOwards Understanding the sPIn Evolution of Stars) project on rotational history of solar-like stars, rotational velocities of several hundreds of stars in open clusters, at various evolutionary stages, from birth to the Sun age, will be measured.
- Goal is to find scaling laws for exchange of angular momentum between the star and surrounding.
- Idea is to predict the global stellar torque, and to use it in stellar evolution models. For this, we need to be able to determine torques of stars of different masses and at different evolutionary stages. We will focus on the early evolutionary phases.
- My task is to investigate the influence of geometry of magnetic field on the transport of angular momentum between the star and the environment.
- I will perform a parameter study, determining the torque in the system:
  - changing the rotation rates from 2-10 days, accretion rates from  $10^{-9}$  to  $10^{-6}$  solar mass/year, with mass outflow of about 1/10 of the accretion rate.
  - all this with various strengths and topology of magnetic field.



## Star-disk setup-1

We use PLUTO 4.1, with stretched grid in spherical coordinates to set-up a 2D-axisymmetric star-disk simulation, with  $R_{\max}$  about 30 stellar radii. The disk is set by Kluzniak & Kita (2000), and viscosity and resistivity are parameterized as  $\alpha c^2/\Omega$ . In our initial setup, the initial magnetic field is a stellar dipole, and we use a split-field method, in which only *changes* from the initial stellar mag.field are evolved in time.



## Star-disk setup-2

- PLUTO code solves for the viscous & resistive MHD.
- In previous work on this problem, C. Zanni introduced a cooling term for removal of viscous and Ohmic heating-it was only to avoid thermal thickening of the disk, not actual radiative mechanism.
- In our current setup with newer version of the PLUTO code, a different tactics, also devised by C. Zanni, is used: heating terms in the viscous and resistive terms are not added in the first place in the code, so no need for the use of cooling term.

$$\frac{\partial \rho}{\partial t} + \nabla \cdot (\rho \mathbf{u}) = 0$$

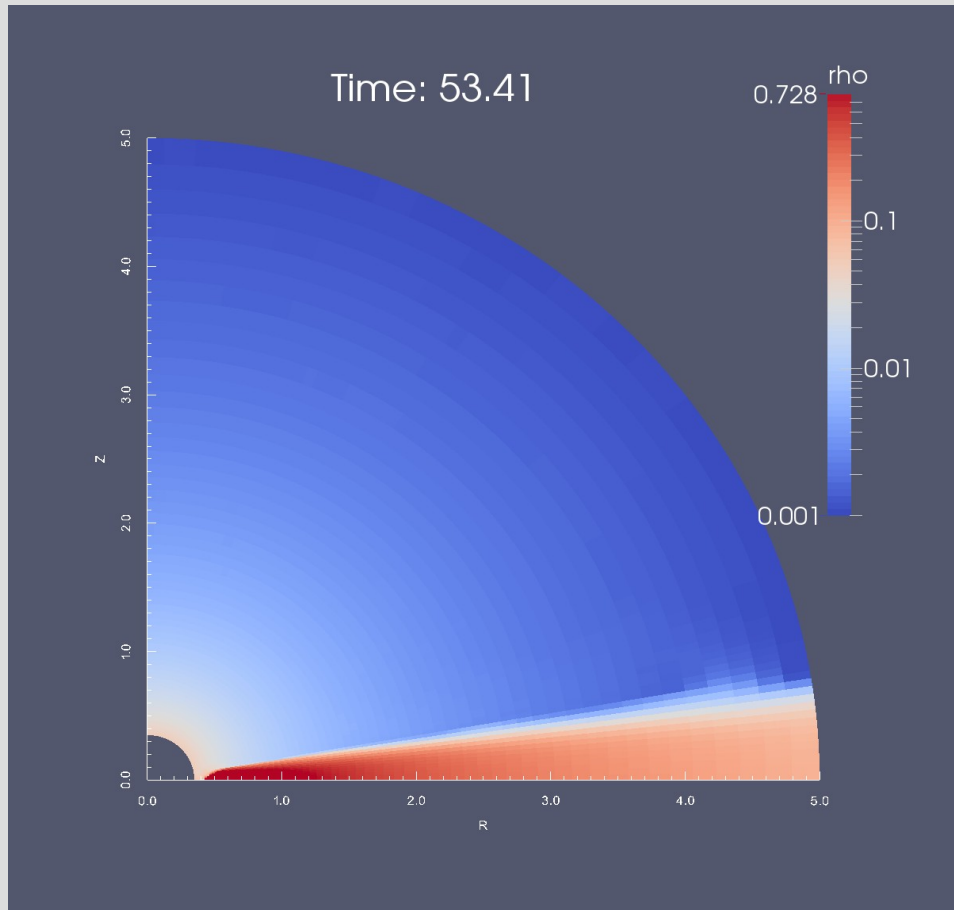
$$\frac{\partial \rho \mathbf{u}}{\partial t} + \nabla \cdot \left[ \rho \mathbf{u} \mathbf{u} + \left( P + \frac{\mathbf{B} \cdot \mathbf{B}}{8\pi} \right) \mathbf{I} - \frac{\mathbf{B} \mathbf{B}}{4\pi} - \boldsymbol{\tau} \right] = \rho \mathbf{g}$$

$$\frac{\partial E}{\partial t} + \nabla \cdot \left[ \left( E + P + \frac{\mathbf{B} \cdot \mathbf{B}}{8\pi} \right) \mathbf{u} - \frac{(\mathbf{u} \cdot \mathbf{B}) \mathbf{B}}{4\pi} \right] + \nabla \cdot [\eta_m \mathbf{J} \times \mathbf{B} / 4\pi - \mathbf{u} \cdot \boldsymbol{\tau}] = \rho \mathbf{g} \cdot \mathbf{u} - \Lambda_{\text{cool}}$$

$$\frac{\partial \mathbf{B}}{\partial t} + \nabla \times (\mathbf{B} \times \mathbf{u} + \eta_m \mathbf{J}) = 0.$$

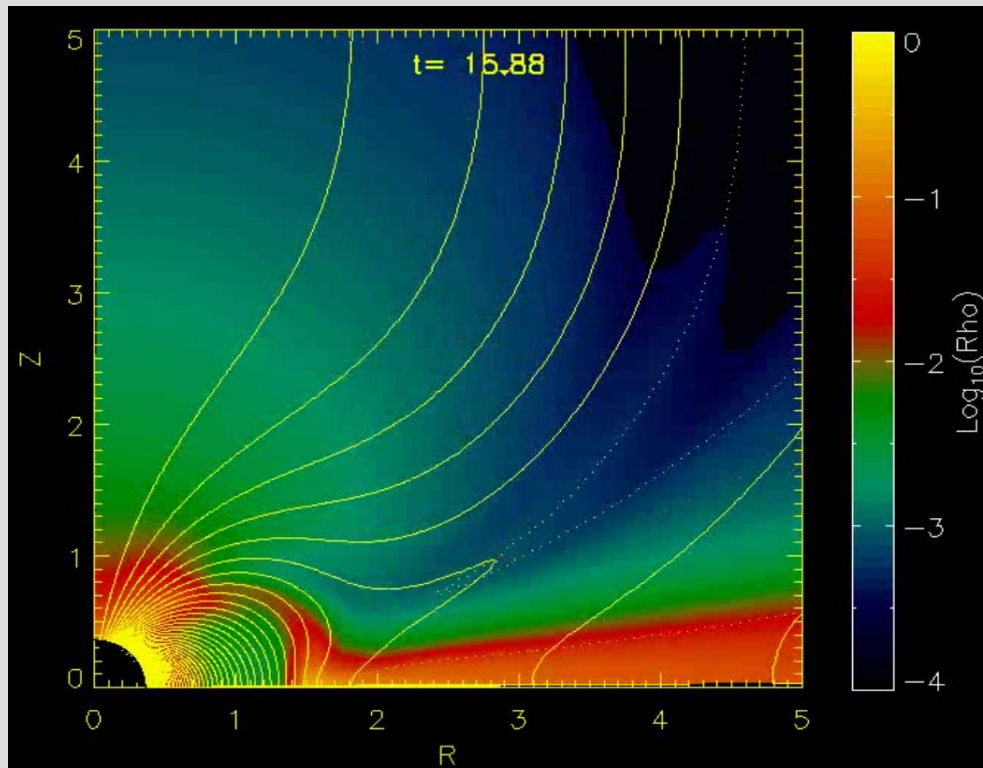


## Disk in HD simulations



- Without the magnetic field, we obtain a stable KK00 disk.

## Resistive MHD simulations

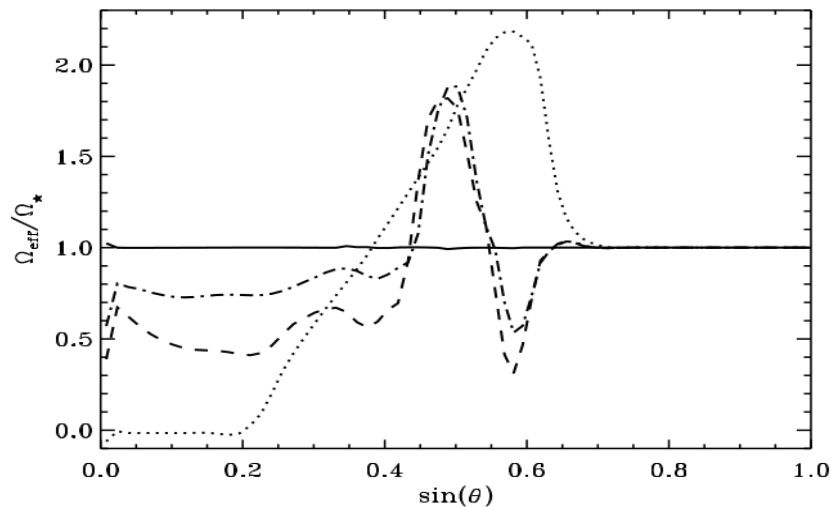


- We obtain a stable resistive-MHD disk for few tens of stellar rotations. I am still working on better relaxation of simulations.

## Stellar boundary condition

- It is not enough to just dump matter onto the star through the accretion column. Depending on the rotation of the portion of the disk from which the matter is lifted (with respect to the corotation radius), it will add or subtract angular momentum to the star (Zanni & Ferreira, 2009).
- Special care is needed to match stellar and rotation of the magnetic field lines.
- Star is assumed to be a perfect, rotating conductor.

1132 C. Zanni and J. Ferreira: MHD simulations



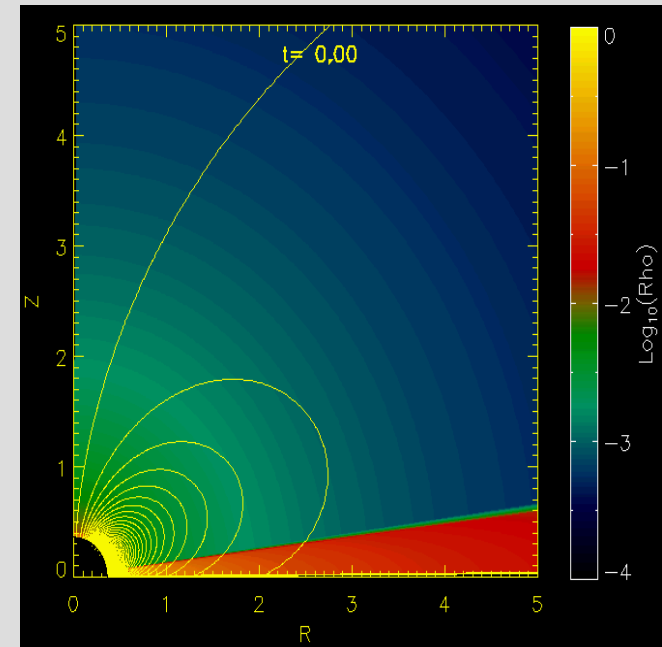
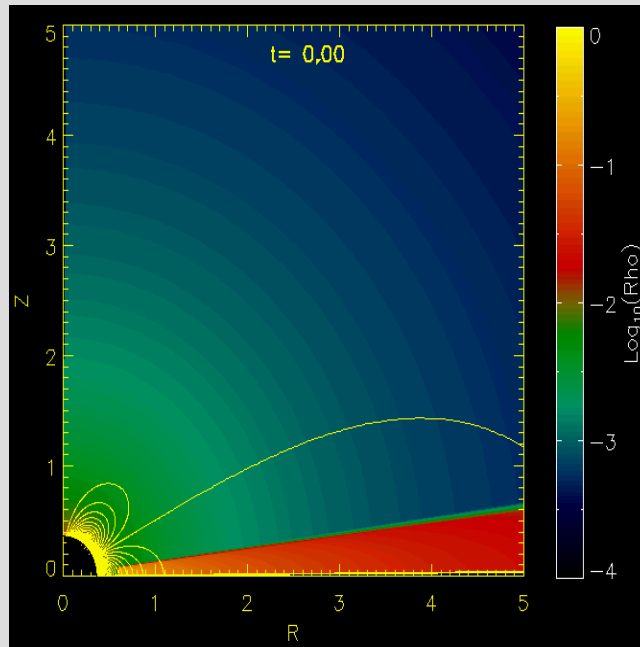
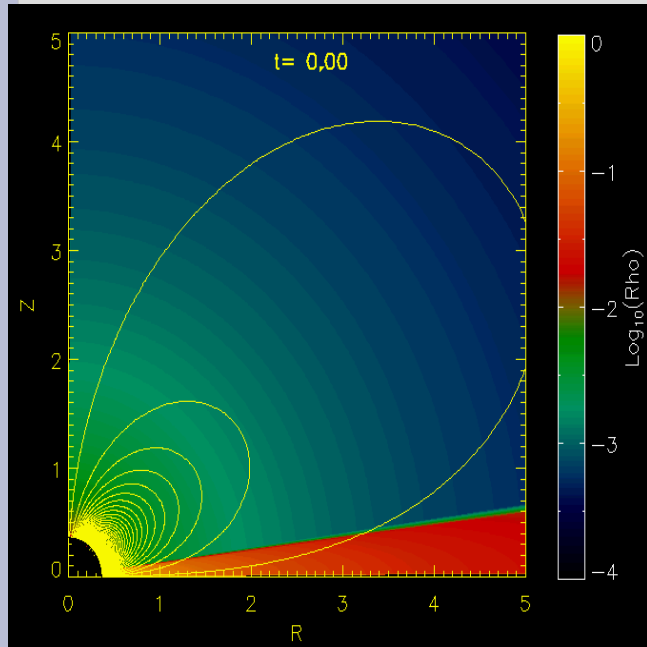
**Fig. A.1.** Effective rotation rate of the magnetic surfaces measured on the surface of the star as a function of the polar angle  $\theta$ . The curves correspond to different boundary conditions on the toroidal field: the boundary condition used in this paper (solid line),  $\partial(RB_{\phi})/\partial R = 0$  condition (dot-dashed line), “outflow” boundary condition (dashed line), and  $B_{\phi} = 0$  condition (dotted line). The snapshots are taken after  $\sim 64$  periods of rotation of the central star.

$$\mathbf{E}_{\Omega=\Omega_{\star}} = \mathbf{B} \times (\mathbf{u} - \boldsymbol{\Omega}_{\star} \times \mathbf{R}) = 0$$

$$u_{\phi} = r\Omega_{\star} + u_p B_{\phi} / B_p$$

- To obtain the best matching, we set simulations with different choices of inner boundary conditions, and compare the matching of stellar and magnetic field rotation.

# Stellar quadrupole, octupole and multipole field



- We will set more complicated stellar field than only a dipole: quadrupole and octupole, and various combinations of those-to mimic a solar field at minimum and maximum of the solar activity.
- After 2D parameter study to find the best torque formulation, work on the same problem should be continued in 3D-it is interesting because of different behavior of reconnection in 2D and 3D.

## Summary

- Our simulations are to provide scaling laws for exchange of angular momentum between the star and surrounding, in dependence of the geometry and strength of the magnetic field.
- We work in axisymmetric 2D setup of a star disk system in viscous, resistive MHD.
- After obtaining a stable setup, we will perform parameter study, first for dipole, then quadrupole and octupole, and some combinations of those. Goal is to find the best torque formulation from 2D simulations.
- After that, I will do the same in full 3D simulations.